

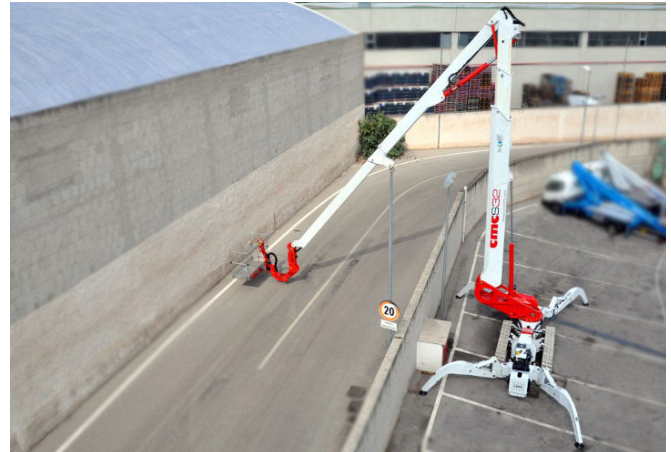


☎ 1300 072 926

VIC 24-28 Williams Road Dandenong Sth. 3175
E vic@globalmachinerysales.com.au
F (03) 9791 7676

NSW Unit 1/21 Penny Place Arndell Park 2148
E nsw@globalmachinerysales.com.au
F (02) 8678 2478





Our newest and most technologically advanced aerial lift. The S32 is the new standard in this size class, offering features that no one else in the world offers.

This is the only articulating and telescopic lift in this size, capable of articulating and telescoping at the same time. Equipped with one articulating and two telescopic lower boom sections, one articulating and one telescopic upper boom sections, movable jib and 180° rotatable quick connect 1.70m

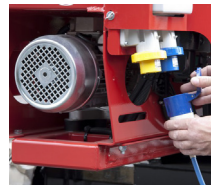
basket with up to 220kg basket load. The S32 offers greater maneuverability and “up (17.5m) and over (16m) capability”. Additionally, this lift is also capable of reaching negative 3.5m below grade. Compact travel dimensions of 1.97m x 1.56m x 7.78m (HxWxL) and height adjustable tracks allow egress in the most difficult of situations, including travel on steeper slopes by lowering one track assembly and raising the other.

Quiet diesel engine/380v electric hydraulic power pack is standard. Also available with hybrid power source. The S32 is one of the best performers and value available in the world today.





Innovative Boom Design



OPTIONAL Hybrid Power Source



Hydraulic Extending Tracks

Compact dimensions

A big spiderlift with compact closed dimensions.

Versatile boom configuration

A double articulating/telescoping boom design, with jib and basket rotation.

220kg basket capacity

A generous basket capacity and size, with 180 degree basket rotation.

BIG horizontal outreach

Up to 16 metres of horizontal outreach, class leading.

Easy to use control system

CAN-BUS technology for ease of use. Including auto return to ground and work position memory functions.

Radio remote control

Standard feature for all functions operated from ground level.



Simple Control System



Narrow Stabiliser Setup

PERFORMANCE

| | |
|----------------------------------|------------|
| Max working height | 32m |
| Max working outreach (120kg) | 16m |
| Max edge of basket reach (220kg) | 13.2m |
| Max basket capacity | 220kg |
| Jib movement | 140° |
| Turret rotation | +/-200° |
| Basket rotation | +/-92° |
| (P) Max slope to stabilise | 8.3° / 15% |
| (W) Max angle approach | 16° / 29% |
| (X) Max travel slope | 19° / 34% |
| Max travel speed | 1.24km/h |

DIMENSIONS

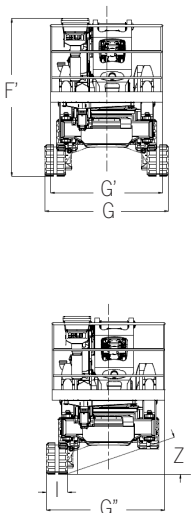
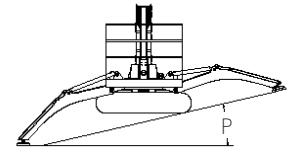
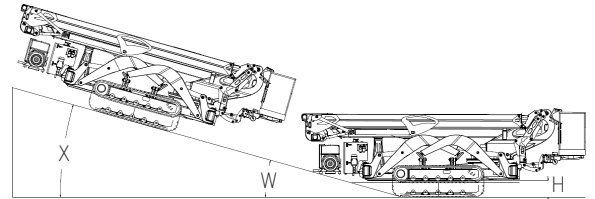
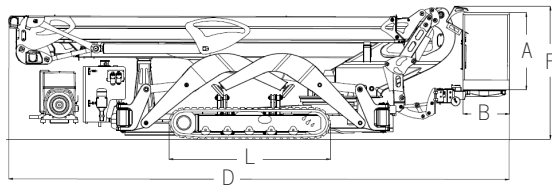
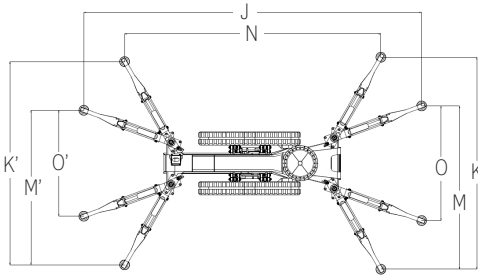
| | |
|---|--------------|
| (A) Basket height | 1.10m |
| (B) Basket width | 0.70m |
| Basket length | 1.70m |
| (D) Total length | 7.78m |
| (F) Height in driving position | 1.97m |
| (F') Height in driving pos. (tracks raised) | 2.35m |
| (G) Total width (tracks raised) | 1.90m |
| (G') Minimum total width | 1.56m |
| (G'') Total width (one track raised) | 1.73m |
| (H) Ground clearance | 0.42m |
| Tracks (LxI) | 2.45 x 0.32m |
| (J) Max longitudinal stabilisation | 8.53m |
| (K) Max cross stabilisation (DX) | 5.41m |
| (K') Max cross stabilisation (SX) | 5.14m |
| (M) Med cross stabilisation (DX) | 4.61m |
| (M') Med cross stabilisation (SX) | 4.39m |
| (N) Min longitudinal stabilisation | 6.52m |
| (O) Min cross stabilisation (DX) | 3.80m |
| (O') Min cross stabilisation (SX) | 3.56m |
| Stabilisers plate | 0.24m |

WEIGHTS

| | |
|---|------------------------|
| Total weight | 7,280kg |
| Max pressure on the foot | 9.69kg/cm ² |
| Max pressure on the track | 0.95kg/cm ² |
| Max pressure in travel | 492kg/m ² |
| Max pres. in work (4 feet open) | 206kg/m ² |
| Max pres. in work (4 feet closed) | 224kg/m ² |
| Max pres. in work (2 feet closed + 2 feet open) | 185kg/m ² |

POWER

| | |
|--------|------------------------------------|
| Engine | Kubota diesel |
| | 380v electric hydraulic power pack |



220Kg

120Kg